

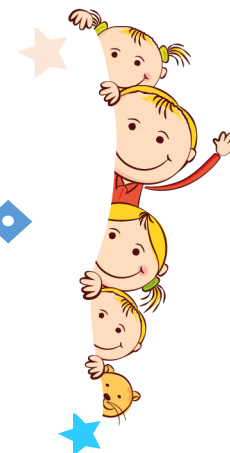
Semaine du 25 novembre au 29 novembre

Restaurant scolaire



Commune de Gardouch

Année 2024-2025



LUNDI


Cèleri rémoulade

Saucisse de volaille

Pommes noisettes



Fromage / Fruit 

MARDI

 Tomates

Rôti de porc

Flageolets

 Yaourt / Fruit 

MERCREDI

Concombre vinaigrette

Escalope de dinde

Purée 

Fromage / Fruit



JEUDI

Macédoine de légumes
mayonnaise


Boulettes de Soja

Tomates & basilic à la
sauce tomate

Pâtes 

 Yaourt / Fruit 

VENDREDI

Potage de poireaux 
& pommes de terre

Calamars à la
romaine

Chou-fleur

Fromage / Fruit 



Produit issu de l'agriculture biologique



Produits locaux - Circuits courts